



LandMax

Suppliers Of Quality Agricultural Machinery

21 Plummers Point Road, Tauranga

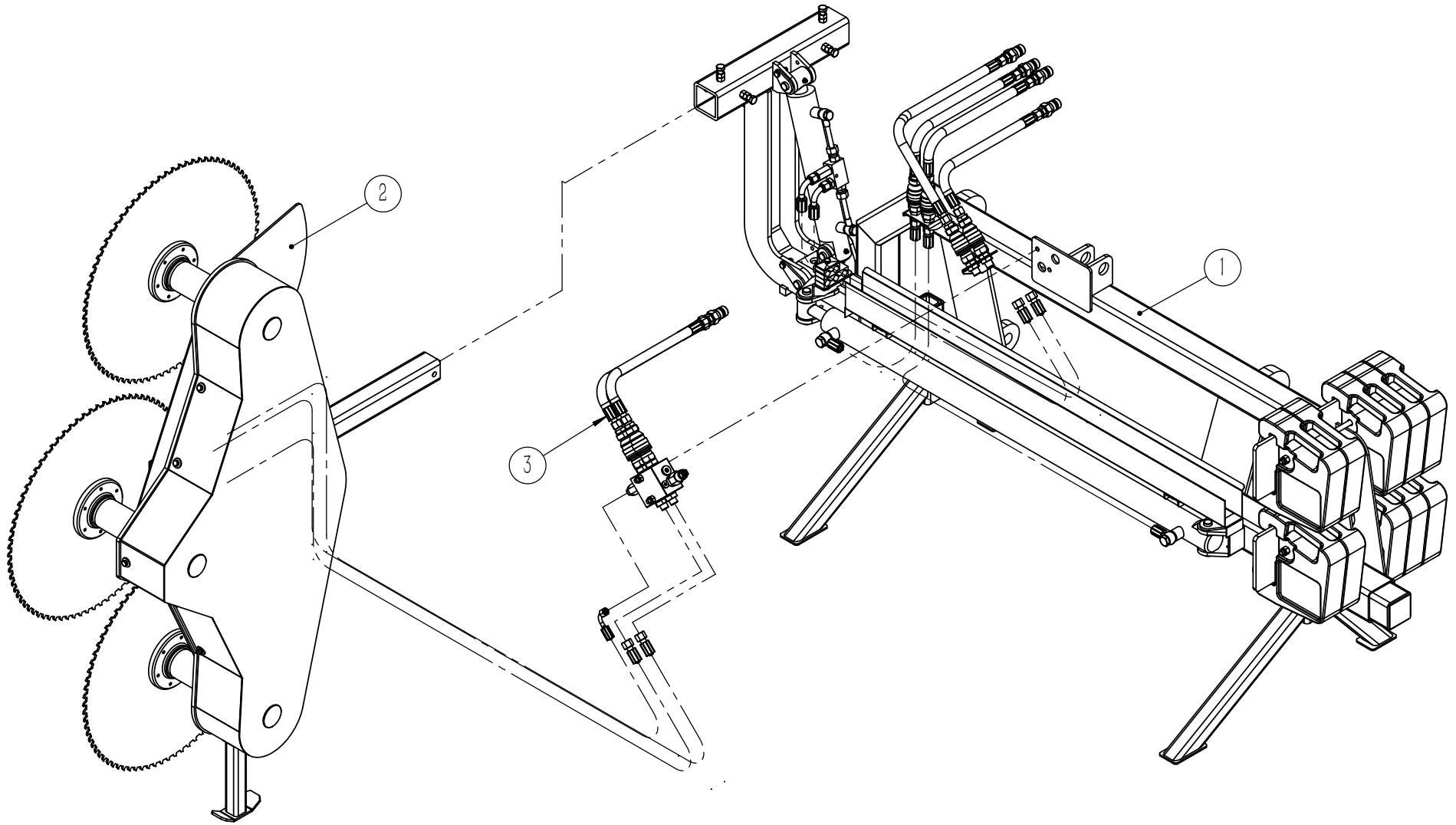


Rotary Hedge Saw

BS175

Parts List

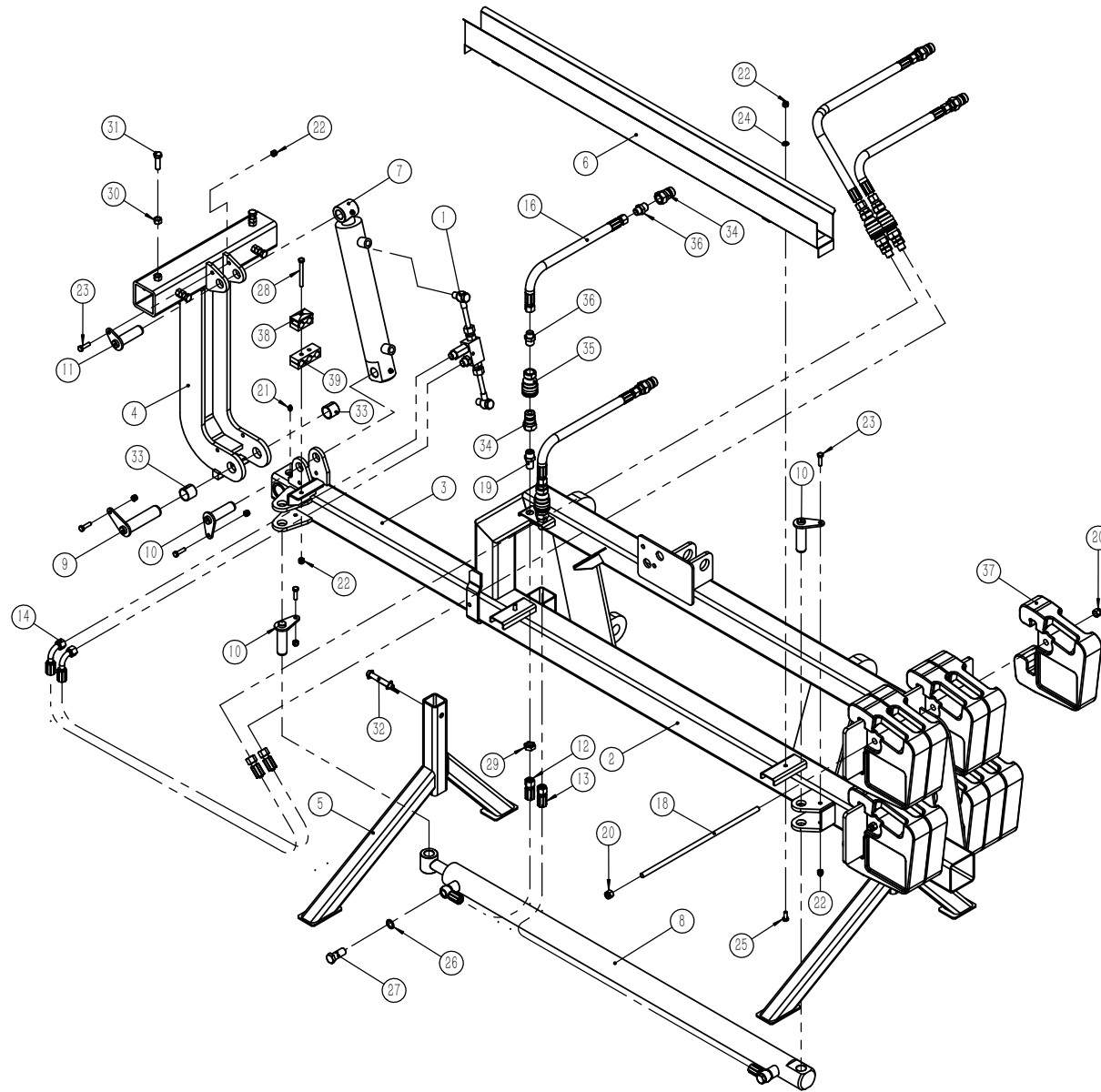
Exploded View of Branch Sawyer—BS175



Spare Parts List of Branch Sawyer—BS175

NO.	PART NO.		Name & Specifications	QTY
1	BS175.001		Base Assy	1
2	BS175.002		Cutter Assy	1
3	BS175.007		Safety valve Assy	1

Exploded View of Base Assy

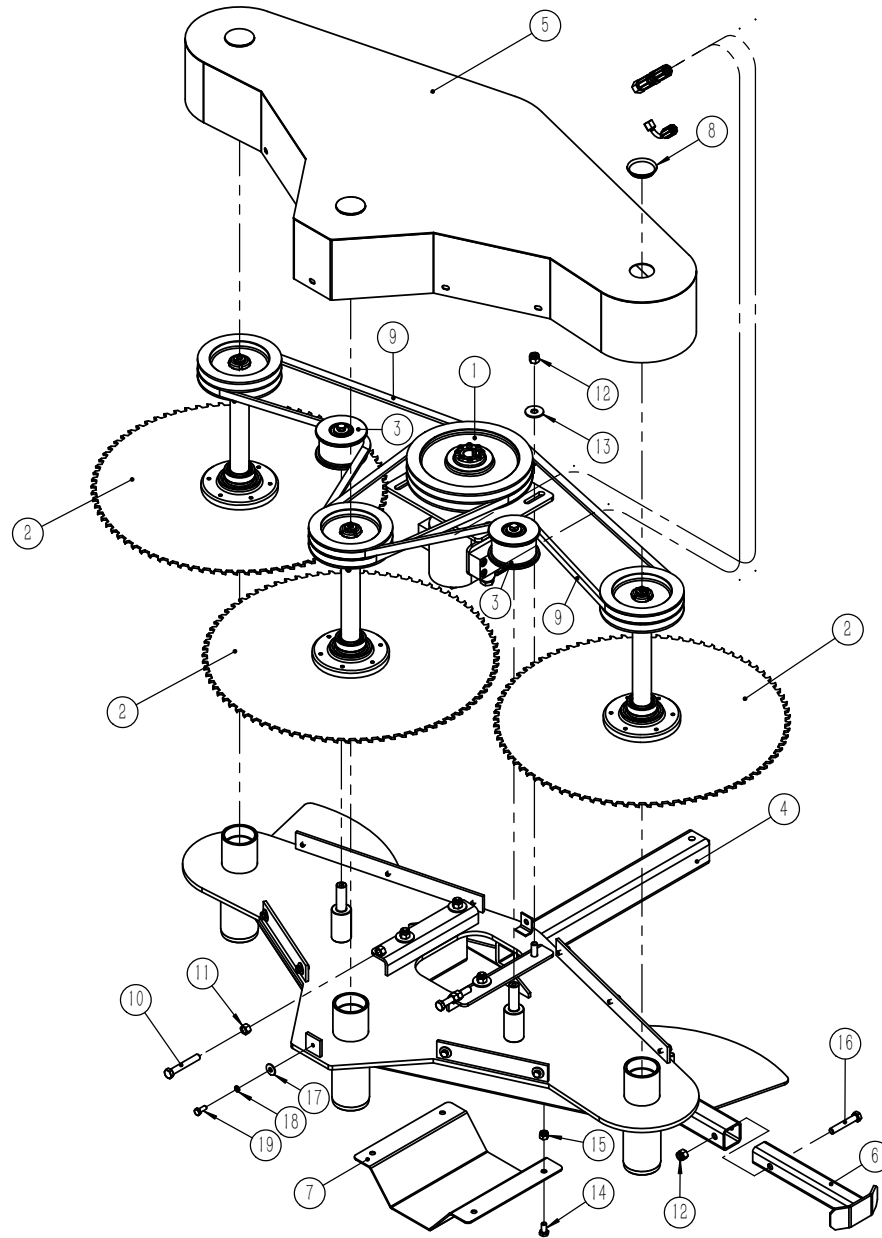


Spare Parts List of Base Assy

NO.	PART NO.		Name & Specifications	QTY
1	BS175.003		Valve Assy	1
2	BS175.10.011		Body weldment	1
3	BS175.10.012		Shifting frame weldment	1
4	BS175.10.013		Rotating frame weldment	1
5	BS175.10.014		Leg weldment	2
6	BS175.10.015		Nest weldment	1
7	BS175.10.017		Cylinder, Rotating	1
8	BS175.10.018		Cylinder, Shifting	1
9	BS175.10.019		Shaft, Rotating	1
10	BS175.10.020		Shaft, Cylinder	3
11	BS175.10.021		Shaft, Cylinder	1
12	BS175.10.022		Hydraulic hose, Shifting	1
13	BS175.10.023		Hydraulic hose, Shifting	1
14	BS175.10.024		Hydraulic hose, Rotating	2
16	BS175.10.025		Hydraulic hose, in/out	4
18	BS175.10.101		Screw	2
19	BS175.10.102		Coupling	4
20	GB889. 1-M12		Lock nut M12	4
21	JB7940. 1-8		Oil cup 8	1
22	GB889. 1-M8		Lock nut M8	8
23	GB5783-M8 x 30		Bolt M8 x 30	5
24	GB97. 1-8		Plain washer 8	2
25	GB5783-M8 x 20		Bolt M8 x 20	2
26	GB982-18		Bonded washer 18	4
27	JB999-M18x1.5		Hollow bolt M18x1.5	2

28	GB5782—M8 × 80		Bolt M8 × 80	1
29	GB6173—M18x1.5		Thin nut M18x1.5	4
30	GB6170—M12		Nut M12	4
31	GB5783—M12 × 40		Bolt M12 × 40	4
32	D—Pin—12x80		D—Pin 12x80	2
33	SF—2—34x30x30		Bushing 34x30x30	2
34	KJ—R1—2—M		Quick release coupling R1/2—M	8
35	KJ—R1—2—F		Quick release coupling R1/2—F	4
36	18H—R1 / 2		Coupling 18H—R1 / 2	8
37	DF—20kg		Clump weight, 20kg	10
38	双孔管夹18		Clamp, Hydraulic hose	1
39	三孔管夹18		Clamp, Hydraulic hose	1

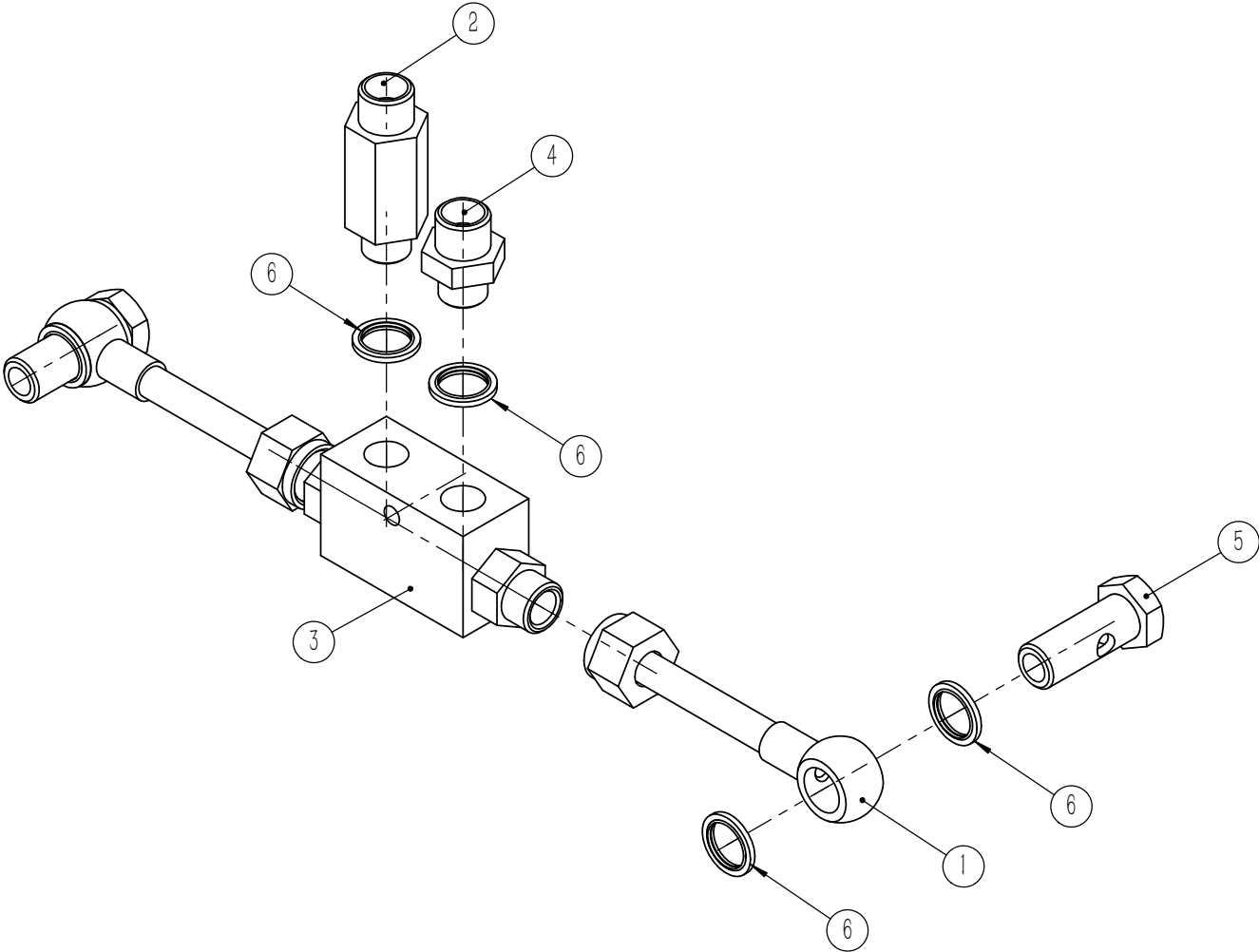
Exploded View of Cutter Assy



Spare Parts List of Cutter Assy

NO.	PART NO.		Name & Specifications	QTY
1	BS175.004		Motor Assy	1
2	BS175.005		Saw Assy	3
3	BS175.006		Tensioner Assy	2
4	BS175.20.011		Cutting frame weldment	1
5	BS175.20.012		Belt pulley cover weldment	1
6	BS175.20.013		Leg weldment	1
7	BS175.20.101		Motor cover	1
8	FM150.123		Rubber cover	3
9	V-SPB2260		Belt SPB2260	2
10	GB5783-M12 × 80		Bolt M12 × 80	2
11	GB6170-M12		Nut M12	2
12	GB889. 1-M12		Lock nut M12	5
13	GB96. 2-12		Plain washer 12	4
14	GB5783-M10 × 20		Bolt M10 × 20	4
15	GB889. 1-M10		Lock nut M10	4
16	GB5782-M12 × 70		Bolt M12 × 70	1
17	GB96. 2-8		Plain washer 8	11
18	GB93-8		Spring washer 8	11
19	GB5783-M8 × 20		Bolt M8 × 20	11

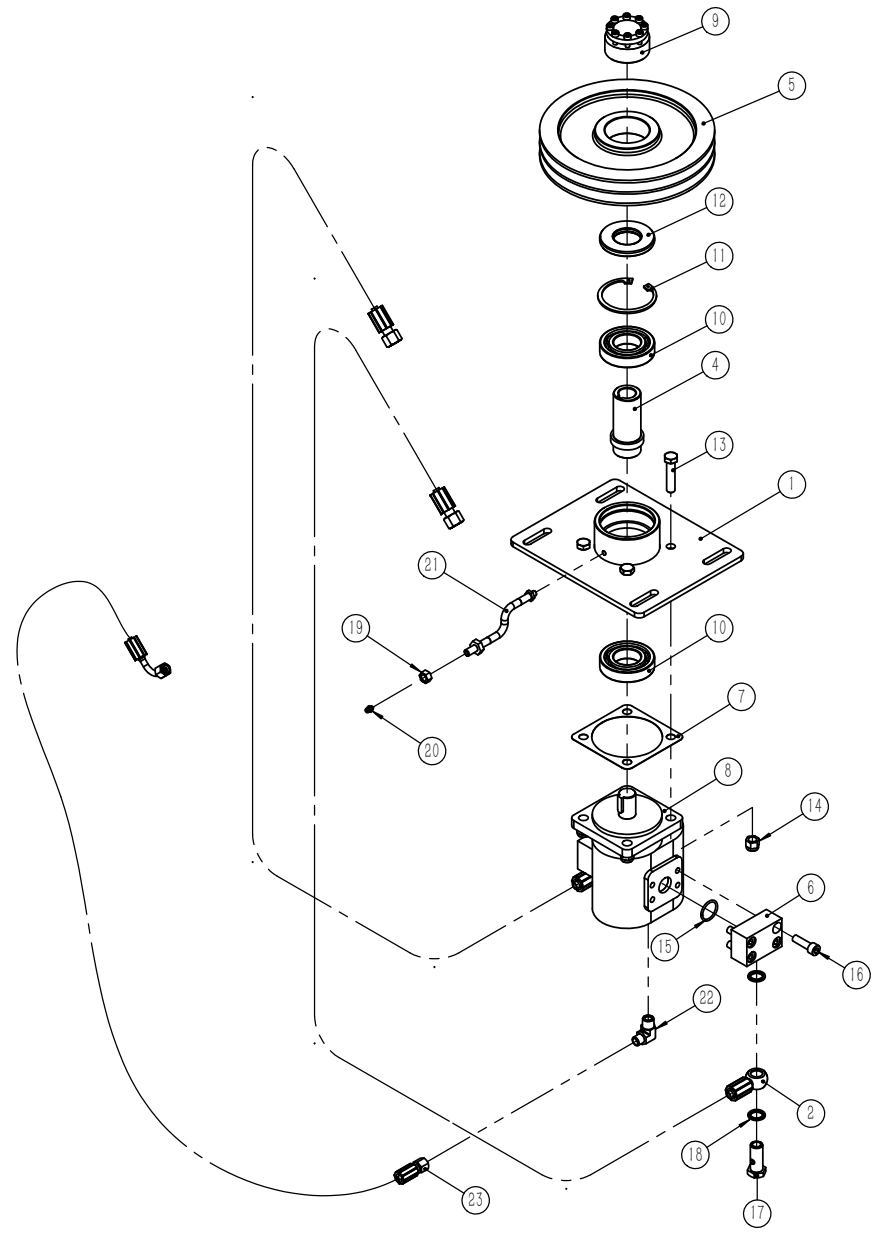
Exploded View of Valve Assy



Parts List of Valve Assy

NO.	PART NO.	Name & Specifications	QTY
1	BS175.30.011	Tube, Safety valve	2
2	BS175.30.101	Coupling 18H-16	1
3		Safety valve	1
4	18H-16	Coupling 18H-16	1
5	JB999-M16x1.5	Hollow bolt M16x1.5	2
6	GB982-16	Bonded washer 16	6

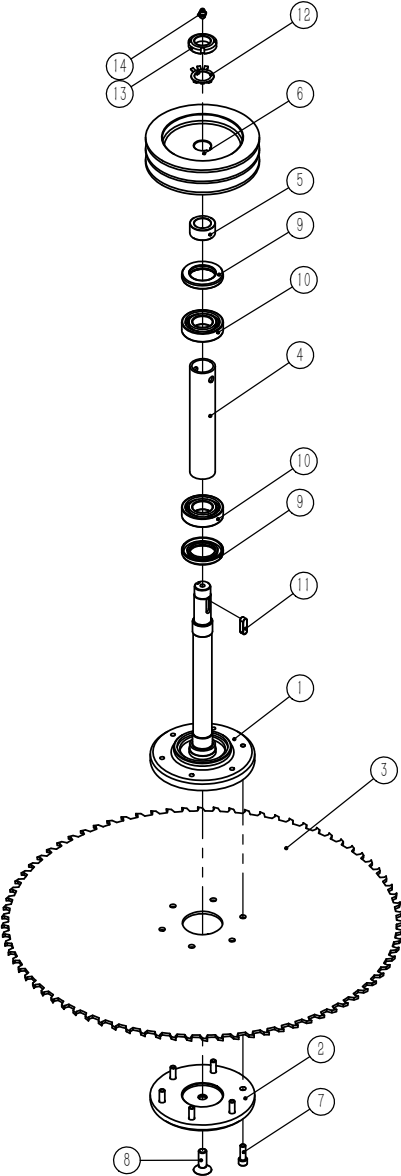
Exploded View of Motor Assy



Spare Parts List of Motor Assy

NO.	PART NO.		Name & Specifications	QTY
1	BS175.40.011		Motor base weldment	1
2	BS175.40.012		Hydraulic hose, Motor	2
4	BS175.40.101		Sleeve shaft	1
5	BS175.40.102		Driving pulley	1
6	BS175.40.103		Cube, Hydraulic hose	2
7	BM110.103		Paper Washer	1
8	CMGh2025-BFPS		Motor CMGh2025-BFPS	1
9	REACH-04-40x65		Swellable sleeve 40x65	1
10	GB276-6208		Bearing 6208	2
11	GB893. 2-80		Circlip for hole 80	1
12	GB13871. 1- FB40x80x8		Oil seal FB40x80x8	1
13	GB5782-M12 x 55		Bolt M12 x 55	4
14	GB889. 1-M12		Lock nut M12	4
15	GB3452. 1-28 x 2. 65		O-ring 28x2.65	2
16	GB70. 1-M10 x 35		Hex socket head cap screw M10 x 35	8
17	JB999-M18x1.5		Hollow bolt M18x1.5	2
18	GB982-18		Bonded washer 18	4
19	GB6170-M10		Nut M10	1
20	JB7940. 1-6		Oil cup 6	1
21	黄油管组合件		Grease hose	1
22	14H-R3/8		Elbow 14H-R3/8	1
23	BS175.40.013		Hose, Back	1

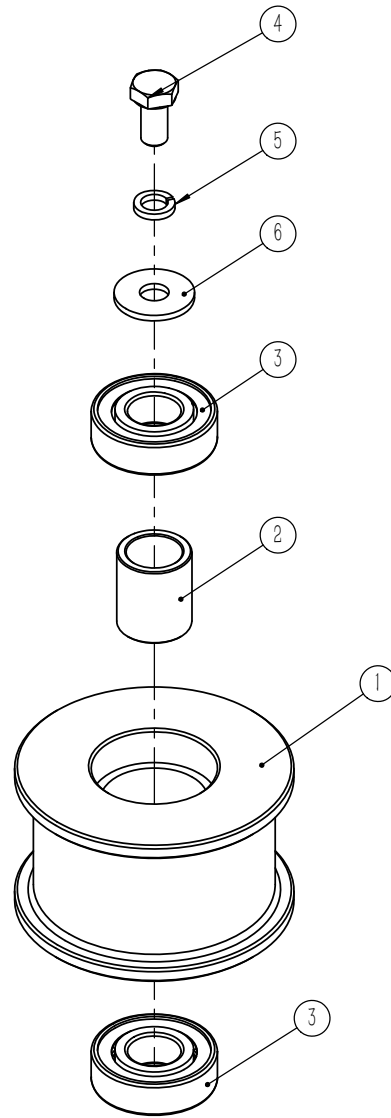
Exploded View of Saw Assy



Parts List of Saw Assy

NO.	PART NO.	Name & Specifications	QTY
1	BS175.50.011	Cutter shaft weldmen	1
2	BS175.50.101	Flange cover plate	1
3	BS175.50.102	Blade	1
4	BS175.50.103	Bearing spacer	1
5	BS175.50.104	Spacer sleeve	1
6	BS175.50.105	Driven pulley	1
7	GB70. 1-M8×25	Hex socket head cap screw M8×25	6
8	GB70. 3-M12×35 (left rotation)	Hex Socket Flat Countersunk Head Cap Screw M12 ×35 (left rotation)	1
9	GB13871. 1-FB38x62x8	Oil seal FB38x62x8	2
10	GB276-6206	Bearing 6206	2
11	GB1096-A8×28	Key A8×28	1
12	GB858-24	Tab Washer 24	1
13	GB812-M24×1. 5	Round nut M24×1.5	1
14	JB7940. 1-8	Oil cup 8	1

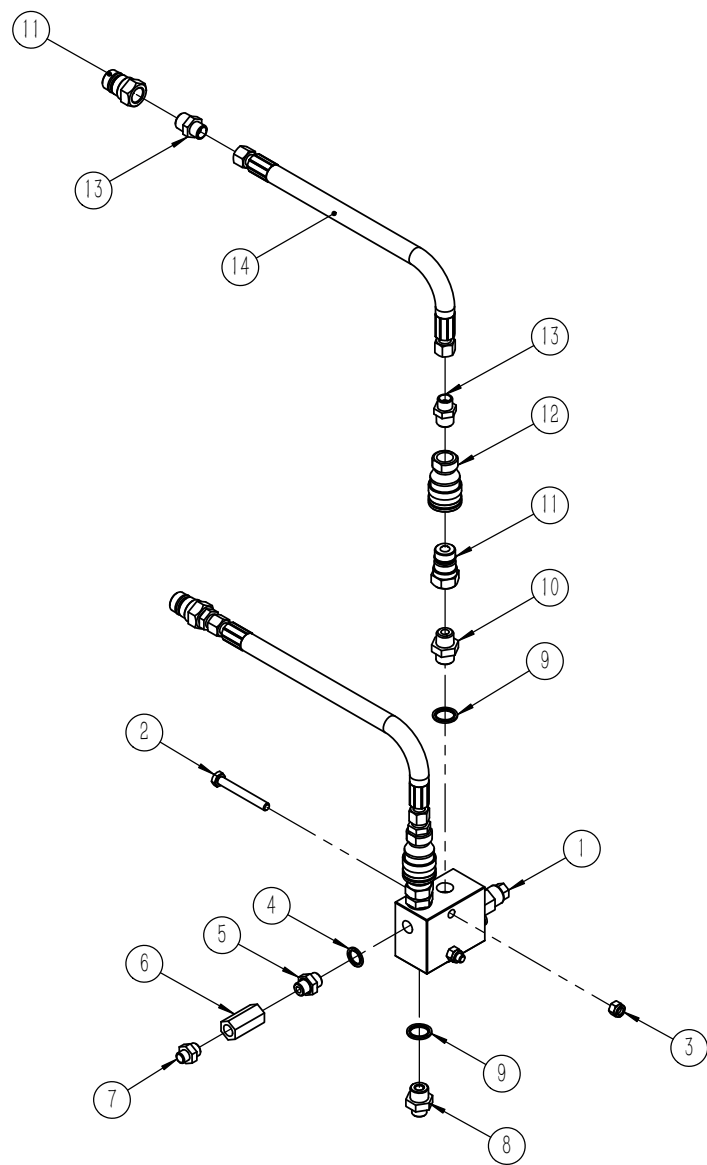
Exploded View of Tensioner Assy



Parts List of Tensioner Assy

NO.	PART NO.	Name & Specifications		QTY
1	BS175.60.101	Tension wheel		1
2	BS175.60.102	Spacer sleeve		1
3	GB276-6204-2RS	Bearing 6204-2RS		2
4	GB5783-M10×20	Bolt M10×20		1
5	GB93-10	Spring washer 10		1
6	GB96. 2-10	Plain washer 10		1

Exploded View of Safety valve Assy



Spare Parts List of Safety valve Assy

NO.	PART NO.		Name & Specifications	QTY
1	BM110.041		Safety valve Assy	1
2	GB5782-M10 × 80		Bolt M10 × 80	2
3	GB889. 1-M10		Lock nut M10	2
4	GB982-18		Bonded washer 18	1
5	18-G3 / 8		Coupling 18-G3 / 8	1
6	S-DN8A-1		Check valve	1
7	14H-G3 / 8		Coupling 14H-G3 / 8	1
8	18H-22		Coupling 18H-22	2
9	GB982-22		Bonded washer 22	4
10	22-R1 / 2		Coupling 22-R1 / 2	2
11	KJ-R1-2-M		Quick release coupling R1/2-M	4
12	KJ-R1-2-F		Quick release coupling R1/2-FM	2
13	18H-R1 / 2		Coupling 18H-R1 / 2	4
14	BS175.10.025		Hose	2